

Seamless Architectural Downlight

Rimless, seamless design that blends perfectly into the ceiling

Architect's choice for clean, minimalist aesthetics

Available in multiple wattages in standard white; customizable to any colour

Elegant solution for spaces where design and discretion matter

LED Downlights LUNOVA



Product Features

Curved Baffle
CCT : 2700K/3000K/3500K/4000K/
5000K/6500K/Tunable White/Dim to Warm
CRI : >80/>90/>95
Beam angle : 15°/24°/36°/55°
Heatsink colour : Grey
Baffle colour : White/Black/Brown/Custom

Louvre options : Honeycomb
Material : Aluminium Die Casting
Mounting : Recessed
Dimming Options : TRIAC, DALI-2 DT6/DT8
IP Protection : IP20
External additional surge protection : Optional 10kV
Rated life (LM 80) : 50,000 hrs

Wattage tolerance = ±5%

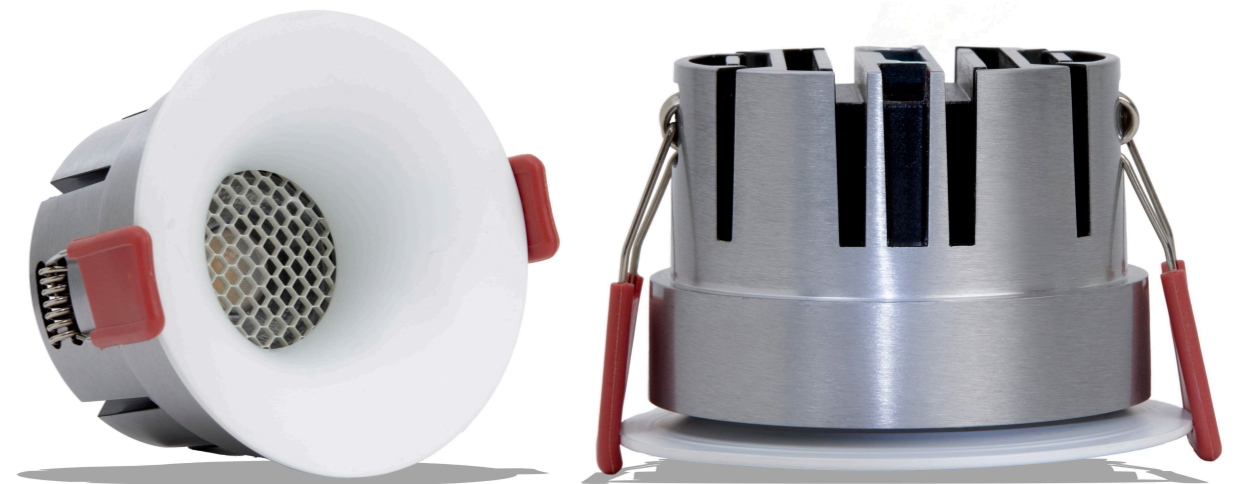
While this catalogue serves as a general guide, specifications and availability may change. Please verify with **THNK** for the latest updates.

LUNOVA TECHNICAL DATA



Rated input voltage : 240V AC, 50Hz
Operating input voltage : 100-300V AC, 50Hz
Operating Temperature : -10°C to +45°C
Power factor : >0.90
A-THD : <10%
Driver type : Non Dim, Isolated, Service Life 30,000 Hours at max. temperature
Inbuilt surge protection : CM - DM : 3kV/4kV

LUNOVA 6W - 20W



MODEL NO. & DESCRIPTION	WATTAGE	OUTER DIAMETER	HEIGHT	CUT OUT	TOTAL LUMENS
TRDSLCL 6W LUNOVA	6W	61MM	55MM	55MM	420 - 600 LUMENS
TRDSLCL 8W LUNOVA	8W	71.5MM	58MM	65MM	560 - 800 LUMENS
TRDSLCL 10W LUNOVA	10W	82.5MM	50MM	75MM	700 - 1000 LUMENS
TRDSLCL 12W LUNOVA	12W	82.5MM	64MM	75MM	840 - 1200 LUMENS
TRDSLCL 15W LUNOVA	15W	93MM	72MM	85MM	1050 - 1500 LUMENS
TRDSLCL 18W LUNOVA	18W	104MM	79MM	95MM	1260 - 1800 LUMENS
TRDSLCL 20W LUNOVA	20W	104MM	79MM	95MM	1400 - 2000 LUMENS